

Anti-PI 3 Kinase R4 Rabbit Monoclonal Antibody
Catalog # ABO15935**Specification****Anti-PI 3 Kinase R4 Rabbit Monoclonal Antibody - Product Information**

Application	WB, IHC, IF, ICC, FC
Primary Accession	Q99570
Host	Rabbit
Isotype	IgG
Reactivity	Rat, Human, Mouse
Clonality	Monoclonal
Format	Liquid

Description

Anti-PI 3 Kinase R4 Rabbit Monoclonal Antibody . Tested in WB, IHC, ICC/IF, Flow Cytometry applications. This antibody reacts with Human, Mouse, Rat.

Anti-PI 3 Kinase R4 Rabbit Monoclonal Antibody - Additional Information

Gene ID 30849

Other Names

Phosphoinositide 3-kinase regulatory subunit 4, PI3-kinase regulatory subunit 4, 2.7.11.1, PI3-kinase p150 subunit, Phosphoinositide 3-kinase adaptor protein, PIK3R4, VPS15
{ECO:0000303|PubMed:23878393}

Calculated MW

150 kDa KDa

Application Details

WB 1:500-1:2000
IHC 1:50-1:200
ICC/IF 1:50-1:200
FC 1:50

Contents

Rabbit IgG in phosphate buffered saline, pH 7.4, 150mM NaCl, 0.02% sodium azide and 50% glycerol, 0.4-0.5mg/ml BSA.

Immunogen

A synthesized peptide derived from human PI 3 Kinase R4

Purification

Affinity-chromatography

Storage

Store at -20°C for one year. For short term storage and frequent use, store at 4°C for up to one month. Avoid repeated freeze-thaw cycles.

Anti-PI 3 Kinase R4 Rabbit Monoclonal Antibody - Protein Information

Name PIK3R4

Synonyms VPS15 {ECO:0000303|PubMed:23878393}

Function

Regulatory subunit of the PI3K complex that mediates formation of phosphatidylinositol 3-phosphate; different complex forms are believed to play a role in multiple membrane trafficking pathways: PI3KC3-C1 is involved in initiation of autophagosomes and PI3KC3-C2 in maturation of autophagosomes and endocytosis. Involved in regulation of degradative endocytic trafficking and cytokinesis, probably in the context of PI3KC3-C2 (PubMed:20643123).

Cellular Location

Late endosome. Cytoplasmic vesicle, autophagosome. Membrane; Lipid-anchor. Note=As component of the PI3K complex I localized to pre-autophagosome structures. As component of the PI3K complex II localized predominantly to endosomes. Localizes also to discrete punctae along the ciliary axoneme (By similarity) {ECO:0000250|UniProtKB:Q8VD65, ECO:0000305}

Tissue Location

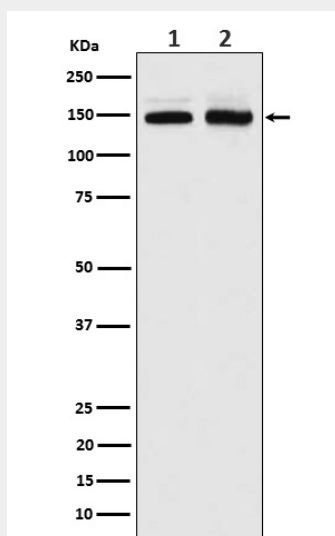
Ubiquitously expressed.

Anti-PI 3 Kinase R4 Rabbit Monoclonal Antibody - Protocols

Provided below are standard protocols that you may find useful for product applications.

- [Western Blot](#)
- [Blocking Peptides](#)
- [Dot Blot](#)
- [Immunohistochemistry](#)
- [Immunofluorescence](#)
- [Immunoprecipitation](#)
- [Flow Cytometry](#)
- [Cell Culture](#)

Anti-PI 3 Kinase R4 Rabbit Monoclonal Antibody - Images



Western blot analysis of PI 3 Kinase R4 expression in (1) Jurkat cell lysate; (2) Molt-4 cell lysate.